

# ***Bowen Pipeline Project***

*Water Sales — Customer Information Pack | May 2026*



# A once-in-a-generation water security opportunity



Purpose: Brief you on products, prices, policies, contracts and next steps



We are asking customers to review this information pack (the slides), consider the offer, and submit a water sales agreement early June 2026



Why timing matters:

BPC prepares and submits its report - July 2026

Queensland Government considers - Aug 2026

Australian Government considers - Sept 2026

# Customer commitments now → water flowing 2030



*Three steps over four or five years. Each step depends on the one before.*

## 2026

### CUSTOMER COMMITMENTS

We request that you:

- Sign/return agreement ideally by **6 June 2026**
- Make the first payment by **24 June 2026**

Agreements and payments support grant request for 50% of construction costs (\$400 million).

## 2027

### FUNDING DECISION

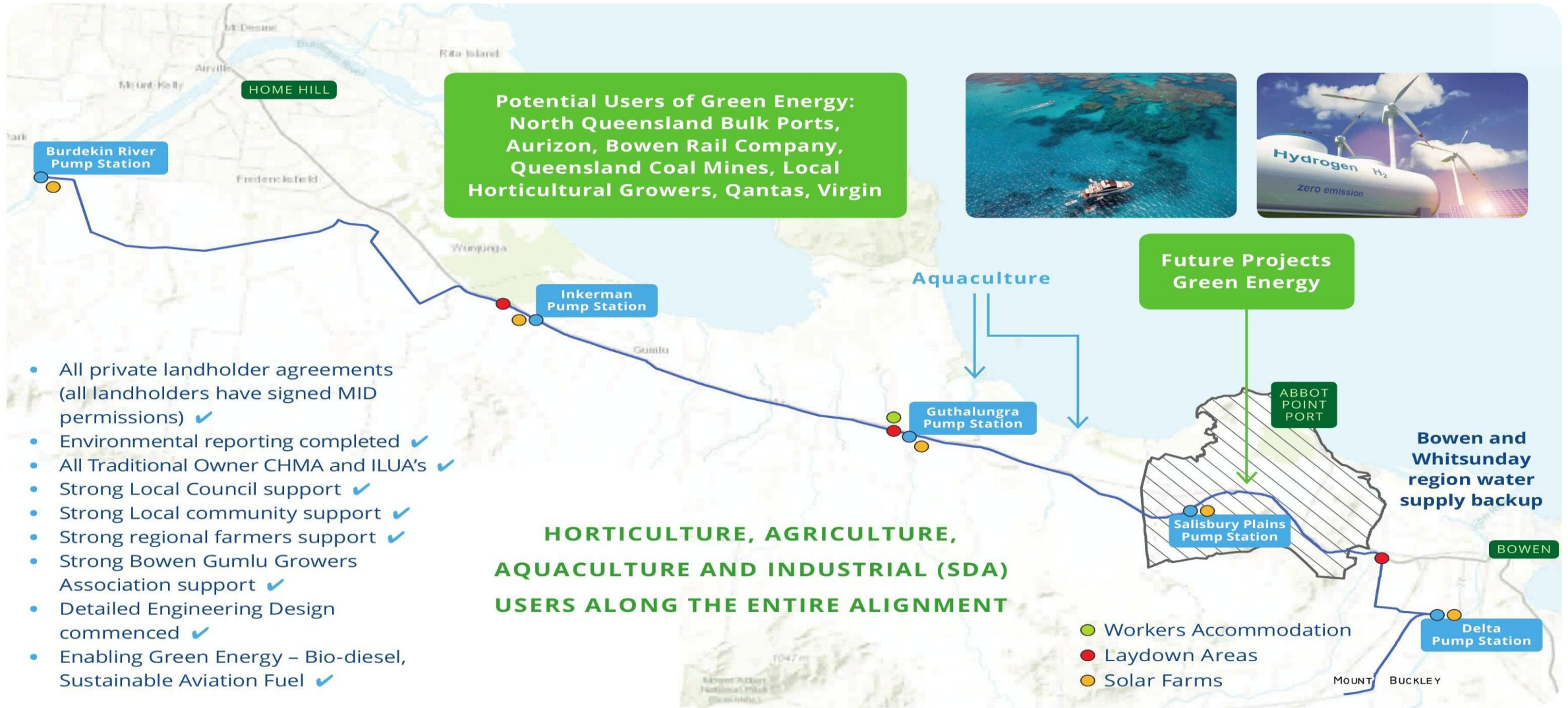
- Government funding decision 2027
- Construction commences post funding decision in 2027.

## 2030

### WATER DELIVERED

- Commissioning and first water delivery in 2030
- 200 jobs in construction
- 1,200 full-time when operational.

# Pipeline route — main trunk line



- All private landholder agreements (all landholders have signed MID permissions) ✓
- Environmental reporting completed ✓
- All Traditional Owner CHMA and ILUA's ✓
- Strong Local Council support ✓
- Strong Local community support ✓
- Strong regional farmers support ✓
- Strong Bowen Gumlu Growers Association support ✓
- Detailed Engineering Design commenced ✓
- Enabling Green Energy – Bio-diesel, Sustainable Aviation Fuel ✓

# Built with Australian-made pipe and Australian-made power



## THE PIPELINE

- 120 km mainline (HDPE, underground)
- 60 km branch lines
- 100,000 ML/year to 50+ users
- 5 pump stations: Burdekin · Inkerman · Guthalungra · Salisbury Plains · Delta

## SMART BUILD

- Australian HDPE — 100 m pipe lengths
- 5 million km of B-double truck movements saved
- 90% fewer welds (9,000 saved · 36,000 hours)
- Terra15 fibre-optic leak detection
- Drone surveys and mobile monitoring.

# Region-wide annual economic uplift



## \$300 M

PER YEAR

Additional regional economic gain — vegetables, fruit, and broader agriculture.

Farms converted from dry-land grazing to irrigated cropping.

## \$1 B

PER YEAR — POTENTIAL

Green energy projects — ammonia, fertiliser, methanol, sustainable aviation fuel and biodiesel.

Supplying the Abbot Point State Development Area.

## \$100 M

PER YEAR — LOCAL WAGES

Winter vegetables already grown here (250 M kg).

8.4% horticultural export growth p.a. — backed by FTAs (Japan, Korea, Singapore, Taiwan).



***Product offer***

# Water from Sunwater's Burdekin-Haughton Water Supply Scheme



# 100,000 ML

PER YEAR

Source: Burdekin Falls Dam

- 100,000 ML potentially available across MP and HP entitlements.
- Water supply agreement with Sunwater by July 2026.

# Tradable water allocation and a Water Delivery Entitlement



## YOU OWN

1. A water allocation or Water Access Entitlement (WAE) underpinned by Burdekin Falls Dam / Burdekin-Haughton WSS
2. A Water Delivery Entitlement (WDE) in the BPC pipeline network

These two rights are conceptually distinct and both are separately tradeable.

## YOU CAN TRADE

1. **Water volume (ML / year)**
  - Permanent transfer
  - Temporary (seasonal assignments)
2. **Delivery flow rate (ML / day)**
  - Permanent transfer
  - Temporary assignment.

# Two bulk water products

---



## Medium Priority (MP)

# 95%

### MONTHLY RELIABILITY

- Standard delivery (270-day basis)
- Delivery available 350 days a year
- Planned shutdowns 2 weeks per year.

## High Priority (HP)

# 100%

### MONTHLY RELIABILITY

- Continuous delivery (no planned shutdowns)
- Additional balancing storage and system redundancy maintain supply during maintenance.

# Medium priority capital price – \$2,500 / ML



Paid over three payments (see below)



Is competitive with other schemes and to support capital funding.



Assumes a 50% government grant and additional private investment to fund project capital costs.

# Customer capital payments



1<sup>ST</sup> payment: 3%



2<sup>nd</sup> payment: 7%

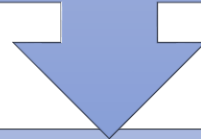


3<sup>rd</sup> and final payment: 90%

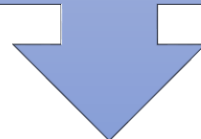
# Two legal documents and key milestones



**1. Water sales agreement (May–June 2026):** First payment by 24 June 2026.



Government funding



**2. Water sales contract:** After government funding and before final payment.

# Water availability and daily delivery



Designed on a 270-day delivery period. Water accessible 350 days a year, 22-24 hours a day (subject to operational needs).

$$\text{Daily supply (ML/day)} = \text{Annual entitlement (ML)} \div 270$$

Customers can receive their full annual entitlement within 270 days — or take water across the whole year at lower flow rates.

## EXAMPLE 1 — IRRIGATOR

*Annual entitlement*

**2,700 ML / year**

*Daily delivery (peak)*

**10 ML / day**

## EXAMPLE 2 — SMALLER USER

*Annual entitlement*

**270 ML / year**

*Daily delivery (peak)*

**1 ML / day**

## MP AGRICULTURE

FIXED

**\$200 / ML**

VARIABLE

**\$25–\$110 / ML**

**TOTAL**

**\$225–\$310 / ML**

# MP Agriculture water use annual charges by Tariff Area



Location	Tariff Area	MP Fixed (\$/ML)	Variable (\$/ML)	MP Total (\$/ML)
Burdekin River to Inkerman	Area 1	\$200	\$25	\$225
Inkerman to Guthalungra	Area 2	\$200	\$50	\$250
Guthalungra to Salisbury Plains	Area 3	\$200	\$70	\$270
Salisbury Plains to Delta	Area 4	\$200	\$85	\$285
Below Delta	Area 5	\$200	\$110	\$310

## Key messages

- Fixed charge is the same across all MP customers: \$200/ML — payable regardless of use
- Variable charge increases with distance / pumping / energy costs net of solar savings
- BPC is assessing battery storage from solar farms to further reduce electricity charges.



## ***Comparison with other schemes***

# Bowen MP leads on reliability and ongoing cost



Criterion	Bowen MP Ag	Lockyer	Granite Belt*	Hughenden MP*
Allocation reliability	<b>95%</b>	90%+	90%+	80%
Capital price	\$2,500/ML	\$1,500/ML	\$6,000/ML	\$1,500/ML
payment 1	3% (\$75/ML)	5% (\$75/ML)	2% (\$120/ML)	2% (\$30/ML)
Annual fixed	<b>\$200/ML</b>	\$500/ML	\$400/ML	\$250/ML
Annual variable	<b>\$25-110 (TBC)</b>	\$40/ML	\$200/ML	\$50/ML
You own the allocation	✓	✓	✓	✓
Trading (volume + flow)	✓✓	✓✓	✓✓	✓✓
Ownership + dividends	✓✓	✓	✓	✓

## Notes for table above

- Trading: 1st tick = volume tradable; 2nd tick = flow rate (ML/day) tradable.
- Ownership: 1st tick = ownership in scheme assets; 2nd tick = dividend / profit share.
- Granite Belt and Hughenden MP are not proceeding, so any 'advantages' are moot.



## ***Owning units and value proposition***

## PARTICIPATION

- You participate directly in the scheme
- Local ownership and local control of a regional asset.

## DIVIDENDS

- Dividends paid to unit holders, after operations commence, forecast for Year 3.
- Profit from industrial water users.
- No other comparable scheme offers a dividend mechanism.

## TRADING UPSIDE

- Units can grow in capital value as the Project de-risks and matures.
- Both volume (ML/yr) and delivery capacity (ML/day) are tradable — permanent and temporary.

# How units in BPC work and how capital payments acquire units



1<sup>st</sup> payment: Units per ML =  $(3\% \times \text{Capital charge } \$/\text{ML}) \div \$2.50 \text{ per unit}$

## Medium Priority

*Capital*

**\$2,500/ML**

*1<sup>st</sup> payment (3%)*

**\$75/ML**

*Units issued*

**30 units / ML**

$(\$2,500 \times 3\%) \div \$2.50 = 30$

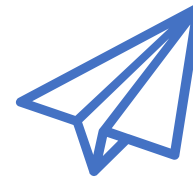
# Next steps



Read info pack  
and review  
agreement



Complete water  
sales agreement  
ideally by **6 June  
2026**



Send to:  
[watersales@bowen  
pipeline.com.au](mailto:watersales@bowenpipeline.com.au)



Pay first  
payment (3%)  
by **24 June 2026**

See Appendix 1 for policies



*Contact us*

[www.bowenpipeline.com.au](http://www.bowenpipeline.com.au)

**Sean Brown**  
Director, BPC

0488 759 303  
[seanb@bowenpipeline.com.au](mailto:seanb@bowenpipeline.com.au)

**Angus MacDonald**  
Director, Highlander

0488 444 973  
[angus.macdonald@highlanderconsulting.com.au](mailto:angus.macdonald@highlanderconsulting.com.au)

# Appendix 1: BPC policies

1. **Minimum volume:** Sets a minimum allocation per outlet to ensure connection costs are covered and the network is efficient. **Policy:** 20 ML per outlet (not per customer).
2. **Fixed and variable tariffs:** Defines how ongoing charges are structured. **Policy:** cost-reflective two-part tariff (fixed + variable).
3. **Nodal vs postage stamp tariffs:** Determines whether prices vary by location. **Policy:** hybrid with uniform fixed charges and location-based variable electricity costs.
4. **Managing participation:** Determines who can be supplied and how to handle oversubscription. **Policy:** exclude uneconomic connections using a cost threshold (\$40k–\$50k/ML), allow customer-funded extensions, and allocate oversubscription via uniform pro-rata reduction.
5. **Trading:** Sets rules for trading water and delivery capacity. **Policy:** allow both volume and capacity trading, subject to network constraints and approval.
6. **Outlet and meter location:** Determines how connection points are set. **Policy:** BPC determines locations, with customer input where feasible.